



Release Notes **FCA US LLC**©

wiTECH™ Diagnostic Application Version	16.03.26
wiTECH™ POD Operating System Version	4.5.3
wiTECH™ MicroPOD II Operating System Version	2.2.4
Release Date	December 12 th , 2015

Table of Contents

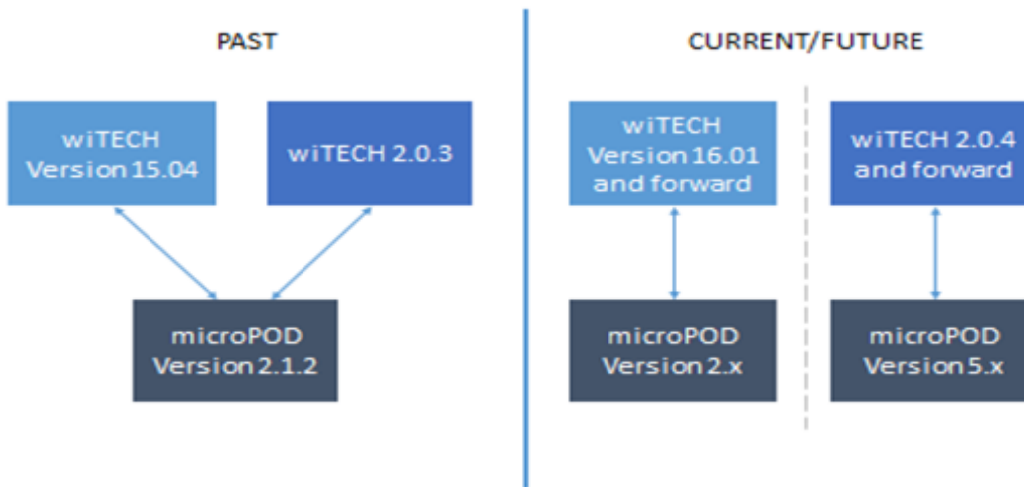
OVERVIEW	3
Important Information	3
System Requirements	4
New or Discontinued Support of Platforms	5
Contact Information	5
WITECH™ SUPPORTED VEHICLES	5
WITECH™ SUPPORT INFORMATION	6
Fixes	6

Overview

Important Information

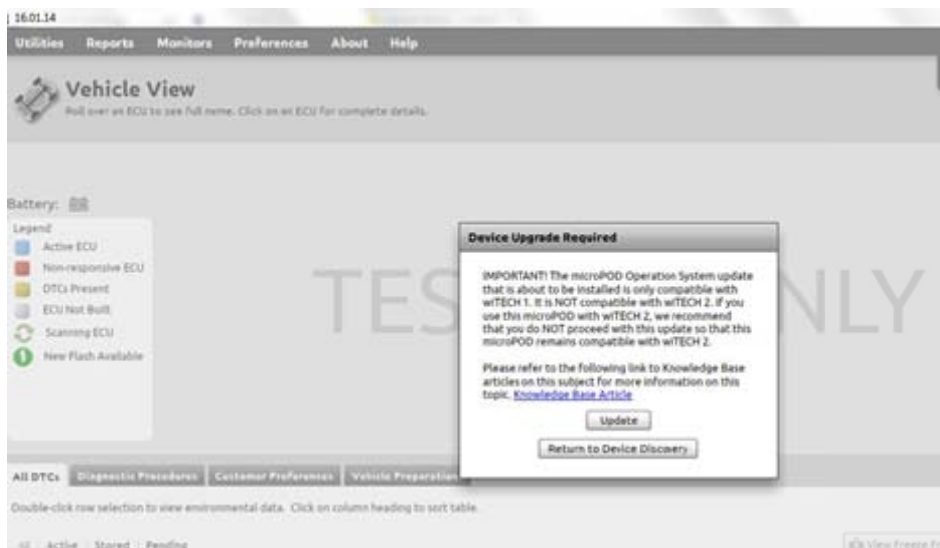
wiTECH microPOD Device Operating System Separation

Due to new and required security updates, microPOD devices will no longer be compatible with BOTH wiTECH 16.01 (and forward) and the web-based wiTECH 2.0 application at the same time. Please refer the diagram below:



Note: wiTECH 2.0 Application has been deployed only to FCA franchised dealer users in the US and Canada.

Starting from wiTECH 16.01 release, the user will be prompted with a choice to convert the microPOD operating system for use with wiTECH 1.0 (version 16.01 and forward) only. The prompt will appear next time the microPOD II is used with wiTECH Diagnostic Application if the user selected US or Canada as the country during the installation of wiTECH 16.01 or any later version. Please refer the screen image below.



If your dealership has more than one microPOD, we highly recommend assigning a dedicated microPod to be used with wiTECH 1.0 (16.01 and forward) and a dedicated one for wiTECH 2.0 System.

If your dealership has just one microPOD, we highly recommend that you use your VCI Pod with wiTECH 1.0 (16.01 and forward) and continue to use your microPOD with wiTECH 2.0. The microPOD device is now easily affordable and we recommend that your dealership purchases an adequate number of microPODs for the technicians.

Changes to the installation process

Starting with wiTECH 16.01, you will be asked to select the country that you are located in. This must be accurately selected to ensure your wiTECH application functions properly. Failure to do so will inhibit the functionality of the diagnostic tool.

Diagnostic Tool Registration

The registration of dealership diagnostic tools with the wiTECH Help Desk is an important safeguard against unauthorized usage of the wiTECH System. If you receive a pop-up window stating that your POD device needs to be registered, please follow the instructions provided by the wiTECH application to register your device. For more information on “Device Registration” please click on the following knowledge base link <http://kb.dcctools.com/index.php?View=entry&EntryID=431>.

Update on Helpdesk for Windows XP

The wiTECH Helpdesk **will no longer provide support** for wiTECH Application that runs on Windows XP/Vista Operating System. Please review the following wiTECH knowledgebase article link for more information: <http://kb.dcctools.com/index.php?View=entry&EntryID=503>

For full details of these features and other wiTECH specifics, review the articles and videos at [DCCTools Knowledgebase](#).

System Requirements

Recommended Hardware:

System Type	Processor	HDD Space	Memory	Operating System	Network Adapter	Monitor
Laptop or Tablet	Intel i7 – 620M Dual Core 2.66GHz or Better	80GB	4GB	Windows 7 Professional 32-bit or 64-bit	10/100 wired, and 802.11g wireless	1920x1080 resolution

Minimum Hardware:

System Type	Processor	HDD Space	Memory	Operating System	Network Adapter	Monitor
Laptop or Tablet	Intel i5 – 520M Dual Core 2.4GHz or equivalent	40GB	2GB	Windows 7 Professional 32-bit or 64-bit	10/100 wired, and 802.11b or 802.11g wireless	1024x768 resolution

Software:

Name	Version
Adobe AIR	3.1 or greater
Java	1.6.0_21 or greater
Adobe Reader	9.0 or greater
Internet Explorer	8.0 or greater

SVG Viewer	3.0
------------	-----

Reasons to Upgrade

It is very important for all users to keep their wiTECH Diagnostic Application up-to-date with the latest software version to take full advantage of new enhancements and ensure you're running with optimal functionality.

New or Discontinued Support of Platforms

Microsoft XP and VISTA are no longer supported for wiTECH as of January 1st, 2015.

Contact Information

If you have any questions concerning this release, please contact the wiTECH Help Desk or reference the knowledge base.

- 1.888.witech-1
- [DCCTools Knowledgebase](#)

wiTECH™ Supported Vehicles

Model Year	Vehicles
2004	HB
2005	HB, LX, ND, WK
2006	DR, HB, KJ, LX, ND, PT, WK, XK
2007	CS, DR, HB, HG, JK, JS, KA, KJ, LX, MK, ND, PM, PT, VB, WK, XK, ZH
2008	CS, DR, HB, HG, J8, JC, JK, JS, KA, KK, LC, LX, MK, ND, PM, PT, RT, VB, WK, XK, ZB, ZH
2009	DR, DS, HB, HG, HB/HG-HEV, J8, JC, JK, JS, KA, KK, LC, LX, MK, ND, PM, PT, RT, VB, WK, XK, ZB
2010	D2, DJ, DR (DC/DM), DS, DX, J8, JC, JK, JS, KA, KK, LC, LX, MK, ND, PM, PT, RT, WK, XK, ZB
2011	D2, DD, DJ, DP, DS, DX, J8, JC, JK, JS, KA, KK, LC, LD, LX, MK, ND, PM, RT, WD, WK
2012	D2, DD, DJ, DP, DS, DX, FF, J8, JC, JF, JK, JS, KK, LC, LD, LX, MK, PF, PM, RT, WD, WK
2013	BK, D2, DD, DJ, DP, DS, DX, FF, FF BEV, J8, JC, JF, JK, JS, KK, LC, LD, LX, MK, NY, PF, RT, WD, WK, ZD
2014	BF, D2, DD, DJ, DP, DS, DX, FF, FF BEV, J8, JC, JF, JK, JS, KL, LC, LD, LX, MK, PF, RT, VF, WD, WK, ZD
2015	4C, BF, BK, BU, D2, DD, DJ, DP, DS, DV, DX, FF, FF BEV, J8, JC, JF, JK, KK, KL, LA, LD, LX, MK, NY, PF, R7, RT, UF, VF, VM, WD, WK, ZD
2016	4C, BF, BK, BU, D2, DD, DF, DJ, DP, DS, DV, DX, FB, FF, FF BEV, J8, JC, JF, JK, KL, LA, LD, LX, MK, NY, PF, R7, RT, UF, VF, VM, WD, WK, ZD

wiTECH™ Support Information

New Features

MY(s) / Vehicle(s)	ECU	Change Description
2013-2016 D2/DJ/DD/DP/ DX	TCM	Added shifter switches A, B, C, and PA to data display for Aisin TCM variant \$41
2016 WD/WK	GPEC PCM	Added “Cam Crank Relearn” Misc. Function for 3.6L equipped with Variable Valve Lift
2016 WD/WK	GPEC PCM	Added “EGR Valve Replaced” Misc. Function for 3.6L equipped with Variable Valve Lift
2013-2016 ALL Powernet/CUS W Vehicles	RADIO	Added Data Services to Flight Recorder for Variant \$80 and \$60 Radios
2013 D-Truck	IPC	Added “Initialize Cluster Configuration w/o Odometer Affect” Misc. Function.
2014-2016 WK/DS	PCM	Added “Enable Fuel Pump” Misc. Function
2016 JK	PCM	New 2.8L EURO6 engine support PCM \$18
2014-2016 KL	BCM	Added new “Configure IBS for Stop-Start” Misc. Function
2016 LA/LD/LZ/WD/ WK	BCM	Added new “Engine Oil Life Save and Restore” Misc. Function
2016 FF	BCM	Added “PROXI Configuration Alignment” Misc. Function
2012-2016 BF/FF/VF	TPM	Added “Reduce TPM Localization Threshold” Misc. Function
2013-2016 ALL Power Net/CUSW Vehicles	RADIO	Added “Sirius Subscription ID” to ECU Details on Variant \$80 and \$60 Radios

Fixes

MY(s) / Vehicle(s)	ECU	Change Description
2007-2008 CS	BCM	Fixed issue with “Vehicle Reconfiguration” for Pacifica vehicles.
2010-2012 D2/DJ/DD/DP/D X	PCM	Updated “View/Reset Duty Cycle Accumulators” Misc. Function for Cummins PCM variant \$20 to allow user to input amount of time to view the data.
2010-2012 D2/DJ/DD/DP/D X	PCM	Updated “VG Turbocharger Cleaning Procedure” Misc. Function for Cummins PCM variant \$20 to perform engine temp check to protect engine from overheating.
2013-2016 D2/DJ/DD/DF/ DP/DX	PCM	Removed Estimated Soot Load based on Delta Pressure and After treatment Model Based Soot Load Estimate as all diagnostic trouble trees and ECU software use the AFT Combined Soot Load Estimate value.

2013-2016 ALL	GPEC PCM	Updated “Injector Kill System Test” to display on supported vehicles only.
2013-2016 ALL	GPEC PCM	Updated “Radiator/Condenser Cooling Fan Relay #1 Control State” Actuator.
2013-2016 ALL	GPEC PCM	Updated “Radiator Cooling Fan PWM Duty-Cycle” Actuator.
2014-2016 VF	ABS	Updated “Longitudinal and Lateral sensor calibration” Misc. Function.
2015-2016 ALL	GPEC PCM	Updated “All OBD2 Monitor Status” to include ‘EGR and/or VVT System Test Monitor Status’ instead of ‘EGR Monitor Test Status’.
2013-2016 D2/DD/DF/DJ DP/DS/DX/PF ZD 2011-2016 JC/JF/LD/LX 2014-2016 KL/WD/WK 2015-2016 LA/UF	IPC	Increased “IPC Self Test” System Test from 10 seconds to 30 seconds.
2016-2017 PF/JC/JF	RADIO/ TGW	Updated “ROW Map Configuration” Misc. Functions for new part numbers.
2015-2016 WK	ANC	Moved ANC Test Routines from Misc. Functions to System Tests tab.
2016 WD/WK	ACC	Fixed “ACC Sensor Alignment” Misc. Function
2014-2015 D2/DJ	ASCM	Updated timeout for "Compressor Circuit Test" Misc. Function
2014-2015 D2/DJ	ASCM	Updated drop down menu for "Deflate Components into Atmosphere" Misc. Function
2008 MK	ABS	Updated "ABS Initialization" Misc. Function. Corrections to address issues found in the field.
2007-2010 JC/JS/MK/PM	PCM	Fixed the missing OBD Monitors
2015-2016 VM	BCM	Updated “PROXI Configuration Alignment” Misc. Function to allow aligning individual ECUs regardless of their current status with the BCM.
2012-2016 FF/VF	BCM	Updated “Restore BCM PROXI Configuration” Misc. Function to display the differences between the old and the new configuration.
2015-2016 BU/FB	PCM	Removed “Check PCM VIN” Misc. Function